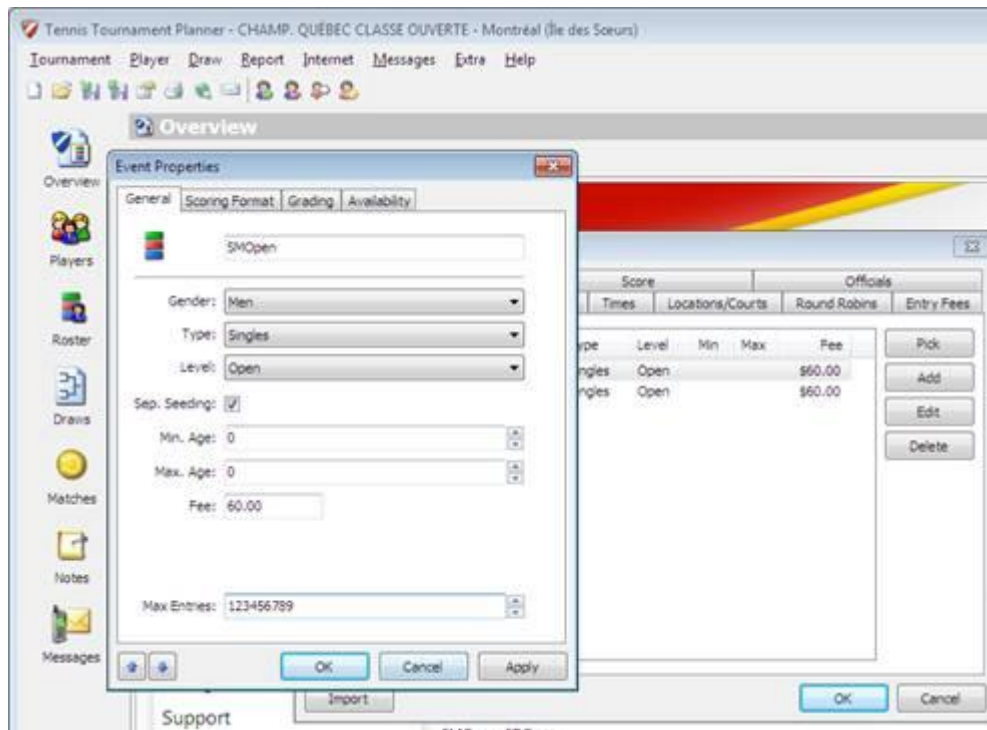


Ability to limit the draw size on Tournament Planner

As long as you have the most up to date version of the planner, you will also have the ability to limit the amount of players who can enter your event online. In the Tournament Properties, click the “Events” tab. Double click on any event and as seen below, you can enter the maximum number of players in that event.



Note:

It is not recommended you use this function in sanctioned tournaments. Refer to the Tournament Regulations section when publishing to add information related to acceptance criteria if the number of entries exceeds the number to which the draw is limited.